

GOT-3150T/GOT-3150TL

15" XGA TFT Extended Temp. Fanless Touch Panel Computer

15" XGA TFT Cost-effective Fanless Touch Panel Computer



- | | |
|---------------------|------------------------|
| 1. Power switch | 6. 10/100 Base-T |
| 2. DC Inlet | 7. USB 2.0 |
| 3. Audio (Line out) | 8. PS/2 keyboard/mouse |
| 4. COM 1 | 9. COM 2 |
| 5. VGA | 10. COM 3 (USB) |



Features

- ▶ 15" XGA (1024 x 768) color TFT LCD display
- ▶ Fanless cooling system and ULV Intel® Celeron® M processor up to 1GHz (GOT-3150T); 600MHz/512k (GOT-3150TL)
- ▶ Supports wide temperature range of -20°C~55°C (GOT-3150T only)
- ▶ Anti-vibration up to 2G (HDD, random)
- ▶ Supports built-in speaker
- ▶ Slim design 64.9mm
- ▶ Supports WLAN antenna (IEEE 802.11b/802.11g) (optional)
- ▶ Easy for expansion: 1 Mini PCI slot & 2 LAN ports
- ▶ Over-current protection-fuse
- ▶ Supports various mounting ways: Panel, Desktop, VESA, Wall (optional)



Side view

Introduction

The GOT-3150T is a 15" XGA fanless touch panel computer supporting wide temperature range from -20° to 55°C. In response to market demand, the GOT-3150TL is a cost effective fanless touch panel computer. By supporting a wide temperature range from -20°~55°C, the GOT-3150T can be used in any harsh environment. The GOT-3150T adopts 15" XGA TFT-LCD and low power consumption ULV Intel® Celeron® M 1 GHz/0K (or 600 MHz/512K for GOT-3150TL) processor. With the growing demand of wireless application, it provides one Mini PCI slot for wireless network connection. By just plugging in the Mini PCI WLAN card, customers have instant access wireless LAN. This model is suitable for many applications including POS, Kiosk, transportation, train, control platform of ships, and oil pipe monitoring systems.

Wide-temperature (-20°~55°C) supported (GOT-3150T)

The GOT-3150T adopts unique extended temperature technology, with a temperature range from -20° ~55°C, with fanless cooling system and compact design for harsh environment.

Speaker support

In response to customers' requests for speaker, the GOT-3150T/TL supports built-in speaker for variety application. With built-in speaker, the GOT-3150T/TL can be used in POS, Kiosk and monitoring systems.

WLAN antenna supported (optional)

The GOT-3150T/TL provides a Mini PCI slot and WLAN antenna for wireless network connections. By simply plugging in the wireless LAN card, customers can use the GOT-3150T/TL in a wireless environment.

Anti-vibration up to 2G

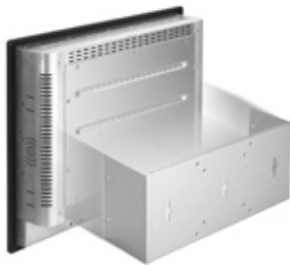
With a unique anti-vibration design patent, the GOT-3150T/TL can work well under 2G (5~500Hz) in operation mode and equipped with a 2.5" HDD.

Specifications

Front Bezel	IP65, NEMA 4 rugged protection, aluminum front bezel	
LCD Panel	15" XGA TFT LCD	
	Brightness	450 nits (GOT-3150T) 260 nits (GOT-3150TL)
	Resolution	1024 x 768
	View Angle	(H)150° (V)150°
Main System	Main board	EP810
	CPU	ULV Intel® Celeron® M processor 1 GHz (GOT-3150T) ULV Intel® Celeron® M processor 600 MHz/512K (GOT-3150TL)
	Chipset	Intel® 852GM+ICH4

System Memory	1x 200pin DDR SODIMM max. up to 1GB
BIOS	Award 4Mbit with RPL/PEX LAN boot ROM, Smartview and customer CMOS backup.
Storage	CompactFlash™ or IDE interface 2.5" HDD
Watchdog Timer	Reset supported; 255 levels
Onboard Graphics	Integrated Intel® 852GM GMCH

	PS/2 interface	1 x PS/2 for keyboard and mouse
	USB	2 x USB port; USB 2.0 compliant
	Ethernet	2 x 10/100Base-T (RJ-45)
I/O Connector	2 x D-sub 9-pin for RS-232	
	1 x D-sub 9-pin for RS-232/422/485	
	1 x D-sub 15-pin(female) for VGA output	
	1 x audio (Line-out)	
	1 x MiniPCI	
	2 x built-in speaker	
Touchscreen	Resistive type	
Power Supply	16~28V _{DC} fuse power protection	
Dimension	396mm (15.6") (W) x 64.9mm (2.5") (D) x 312mm (12.3") (H)	
Weight	6.5kg	
Certification	CE	
Environment	Operation temperature: -20°C~55°C (-4°~131°F) (GOT-3150T) 0°~50°C (32°~122°F) (GOT-3150TL) Relative humidity: 10%~95% @ 40°C; non-condensing Operation vibration: 2G, 5~500Hz, random for 2.5" HDD 3G, 5~500Hz, random for CompactFlash™	

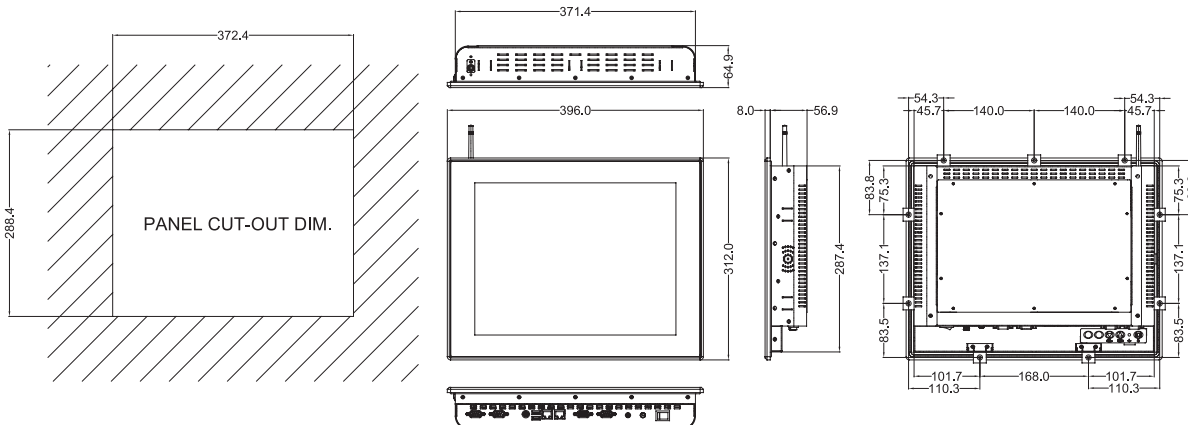


Wall mounting



Anti-vibration design

Dimensions



Ordering Information

GOT-3150T	15" XGA TFT fanless touch panel computer with extended temp. (-20°~55°C), Intel® Celeron® M 1 G/0K
GOT-3150TL	15" XGA TFT fanless touch panel computer with Intel® Celeron® M 600 MHz/512K
Wall/VESA kit (pre-install)	Wall/VESA mount kit for GOT-3150T
Desktop stand (Pre-install)	Desktop stand kit for GOT-3150T
E202003329	VM-105 (ARM) LA-35-RC (VESA ARM wall mount)
E202003330	VM-101 (ARM) LA-31-RC (VESA ARM clamp type)
50966A23020E	Power adapter, 72W, 110~230V _{AC} to 24V _{DC}

*Specifications and certifications are limited to optional.

Optional EOS Installation

Window® XP Embedded
Windows® CE.NET

Optional OS Installation

Windows® 2000
Windows® XP
Linux Kernel 2.6

Medical Panel Computers

PANEL2000 Slim Client Panel Computers

VTA Series

GOT Fanless Touch Panel Computers

PANEL 1000/5000 Industrial Panel Computers

Industrial Workstations

PANEL6000 Industrial Flat Panel Monitors