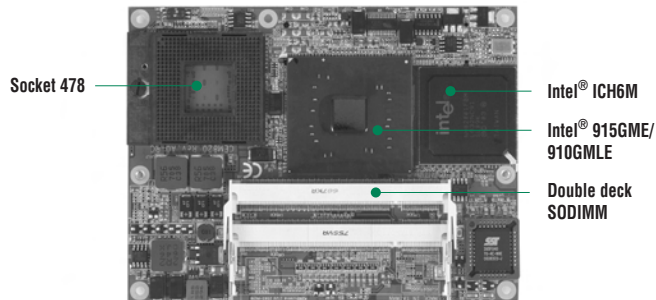


CEM820

Intel® Pentium® M COM Express™ Type-II Module

New



System

| | |
|---------------------|---|
| CPU | Intel® Pentium® M / Celeron® M processor with FSB 400/533MHz |
| System Memory | 2 x 200-pin SODIMM support DDR2 PC2-3200/4200 max. up to 2GB |
| Chipset | Intel® 915GME/910GMLE+ICH6M chipset |
| BIOS | Phoenix-Award 4Mbit with RPL/PXE LAN Boot ROM, SmartView and Customer CMOS Backup |
| Watchdog Timer | 255 levels as Reset from 0~255 seconds |
| Expansion Interface | * 19 lanes for PCIe; one x16 for discrete graphic card or SDVO for converting solution; four x1 for add-on peripherals * PCIe Mini card specifications supported * 32-bit/33MHz PCI for 4 Bus masters |
| Size | 125 x 95 mm |
| Temperature | 0~60°C, operation |
| Operation Humidity | 10% ~ 95% relative humidity, non-condensing |

I/O

| | |
|------------------|---|
| MIO | 1 x PATA-100 IDE, 2 x SATA-150, LPC interface |
| GPIO | 4 channel IN and 4 channel OUT |
| Ethernet | Realtek RTL8111B for Gigabit Ethernet |
| Audio | AC'97/HD Audio interface for external Codec |
| USB | 8 x USB 2.0 port |
| SMBus | 1 port |
| I ² C | 1 port |

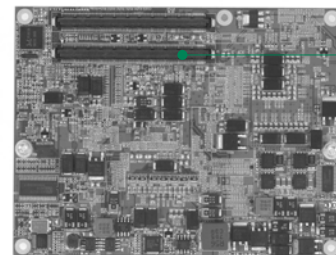
Display

| | |
|------------------|--|
| Chipset | Integrated in Intel® 915GME/910GMLE |
| Memory Size | Max. up to 128MB frame buffer sharing system memory |
| Resolution | * Standard Display Mode: CRT: 2048 x 1536; LVDS LCD: 1600 x 1200 |
| Output Interface | * CRT for DAC output through interface connector * LVDS LCD through interface connector |



Features

- ▶ Intel® Pentium® M / Celeron® M processor
- ▶ Intel® 915GME/910GMLE+ICH6M chipset
- ▶ DDR2 400/533 up to 2GB
- ▶ With high performance integrated graphic controller and discrete solution through PCIe x16 interface
- ▶ 19 lanes for PCIe
- ▶ 8 USB 2.0 ports



COM Express™ type II connector

Rear view

Packing List

- Quick installation guide
- Manual, driver, & utility CD

Ordering Information

| Standard | |
|--------------|---|
| CEM820VG | COM Express type-II module with socket 478, CRT/LVDS LCD, Gigabit Ethernet |
| CEM820VG-1GE | CEM820 with Intel® Celeron® M ULV 1GHz/ZC CPU onboard, CRT/LVDS LCD, Gigabit Ethernet |
| Optional | |
| 507CEM83020E | CEM830 heatspreader module for PGA type CPU |
| 507CEM83030E | CEM830 heatspreader module for BGA type CPU |
| CEB94000 | ATX form factor baseboard |